



Time out

Creating a tranquil, zen oasis was a priority for the owners of this remodeled master bedroom suite

With any bathroom remodeling project, there's a need to respect the overall style of a house. But this doesn't mean you can't explore other design directions – a good team will get the mix just right, as this project illustrates.

Homeowners Wayne and Srey Peterson wanted their new master bathroom to have a soothing, zen influence.

"We wanted the room to have a warm, clean look, with a calming, Asian feel," says Srey Peterson. "Creating a tranquil environment was important. We also

wanted to introduce a touch of nature."

The couple commissioned architect Taunya Nelson and interior designer Brandi Hagen to come up with an appropriate design.

"It was a balancing act," says Hagen. "On the one hand, there was the desire for the meditative, Eastern-inspired design. On the other, the owners didn't want to give up the contemporary edge evident throughout the rest of the house. The solution was to design a bathroom that presented a contemporary twist with

a distinct Asian influence."

Nelson says all traces of the existing 1980s-style bathroom were removed, including white laminate cabinets, white tiles with dark grout, and glass block walls that separated the room from a sun room.

"Although the bathroom is an internal room, there was still a need to provide some privacy with the windows into the sunroom," she says.

Two Lumicor Botanical Beach Grass panels, set in walnut frames, were positioned either side of the tub. The

Above left: The owners of this remodeled bedroom suite wanted a relaxing retreat away from the bustle of the household. Architect Taunya Nelson says curved shapes were introduced to the bedroom, to balance the more geometric lines evident in the rest of the house. New walnut cabinetry was custom designed to match wood tones in the bathroom. A double-sided fireplace warms the bedroom and the passage leading to the bathroom.

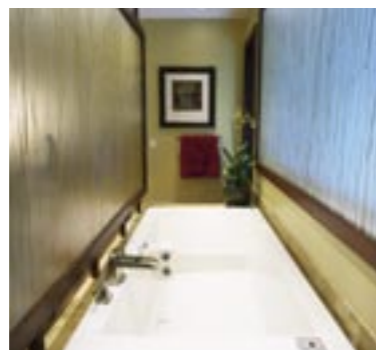
Above: Shelving and art works were introduced to the passage. Similarly, the bathroom, designed to look more like a room, also features selected pieces of art.



Above: To create a dramatic entrance to the bathroom, interior designer Brandi Hagen placed an antique bench seat in front of a large Botanical Beach Grass Luminor panel. Colors and materials were chosen to create a zen-like simplicity.

Right: A second panel on the other side of the tub screens a sun porch, providing privacy yet still allowing natural light into the room.

Facing page: Symmetrical sapele wood vanities resemble antique Chinese chests. They are topped with onyx. Shower and toilet rooms are positioned at opposite ends of the bathroom.



panels feature grasses set into the glass. "The panels enhance the bathing experience – it is rather like bathing in a grassy field," says Nelson. The visual impact of the panels is heightened by the symmetry of the steps leading up the tub on either side. Matching wood vanities, either side of the entrance, and a shower and toilet room at opposite ends of the bathroom further enhance the sense of symmetry. The designers say creating these separate rooms helps to make the overall



space more intimate.

"It was a very large space to be working with," says Hagen. "We needed to bring the scale down a little."

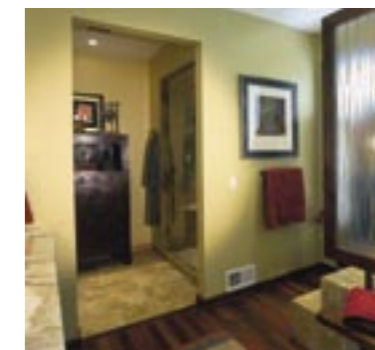
Designing fixtures to resemble furniture pieces was a way to reinforce the Asian look. It also makes the bathroom look more like a room where one might want to linger, says Hagen.

The wood vanities were designed to look like traditional Chinese chests. Antique furniture also features – an 18th century bench seat hides the access panel

to the tub and is positioned opposite the entrance to the room. In the shower dressing area, an antique armoire provides extra storage.

A new Brazilian walnut floor was laid to further create the sense of a room. Wet areas feature limestone tiles.

"Colors throughout the room were inspired by the onyx countertops," says Hagen. "These established the wood tones and the color of the limestone. I am a great believer in using wonderful materials – but using them simply for maximum impact."





Above: In keeping with the owners' desire for a spa-like environment, the large shower also operates as a steam shower. The interior is lined with limestone, with a border of matching onyx tiles. A mosaic niche features glass shelving, providing plenty of space for smaller items. Lighting throughout the bathroom is designed to enhance a sense of tranquility.

Architect: Taunya Nelson, AIA, CID, NCARB, ASID industry partner, Vujovich (Minneapolis, MN)

Interior designer: Brandi Hagen, ASID, Eminent Interior Design

Builder: Vujovich Design-Build, NARI, ASID industry partner

Bath: Maax Pearl Aiiki in Biscuit, supplied by Vujovich

Vanity: Custom sapele wood cabinetry from Vujovich

Basins: Kohler Kathryn in Biscuit

Faucets: Delta Vesi Channel faucets in brushed nickel

Shower fittings: Grohe satin nickel body spa

Shower tile: Golden Sienna Patika mosaic floor with green onyx border

Flooring: Brazilian walnut planks

Wallcoverings: Eggshell paint

Lighting: Cubox 4 sconces from Illuminating Experiences

Countertops: Pistachio onyx slab, polished with eased edge

Screen: Lumicor Botanical Beach Grass panels set in custom walnut frames

Photography by Jamie Cobeldick